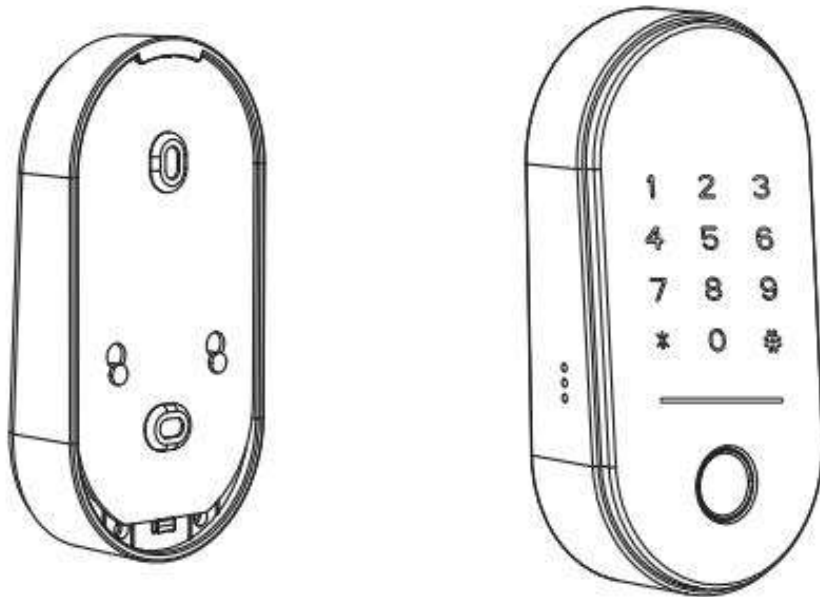


Smart Lock

User Manual

K6B-TB

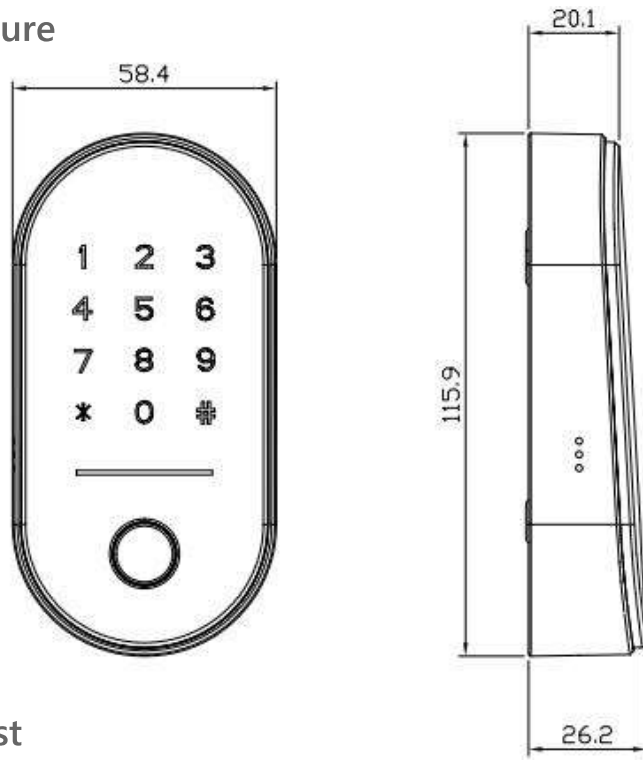


Special Attention:

1. Please replace for the battery when low wattage alarm.
2. Reading this manual carefully before installation, and keep it for future reference.

1. Introduction

1.1.Lock structure



1.2.Packing List

💡 Check the following drawing to check whether the package contains all the parts

NO	Name	Qty	NO	Name	Qty
1	Front Pane	1	2	Card	3
3	User Manual	1	4	Screw KA4*25	2
5	expansion screw Ø6*30	2	6	SIM card ejector	1

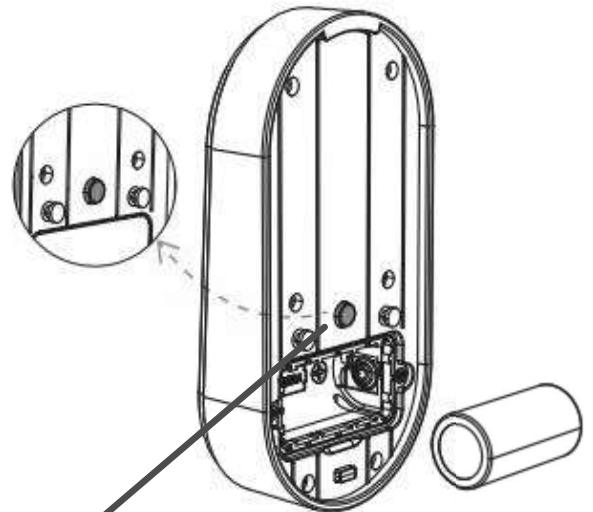
1.3.Specifications

Suitable for Models	KB-TB	Doors Applicable	Aluminum door Wooden door
Materials	plastics	Working Voltage	1*CR123A
Lock Weight	0.3KG	Door Thickness to Fit	ALL
Unlocking Way	Bluetooth Password Card Gateway(option)	Data Capacity	Fingerprint: 200 Password: 150 Card: 200

Color	Black	Working Temperature	-10°C-55°C
Low Wattage Alarm	Less than 4.8V	Working Humidity	0-95%

System Initialization

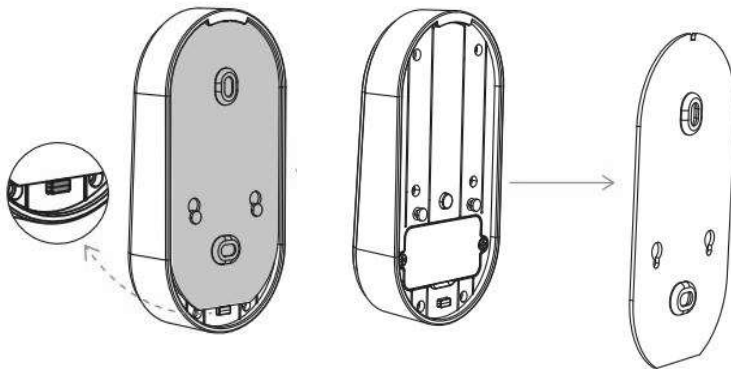
Open the panel and the battery cover, long press the "Pick-proof" button on the back panel, insert the battery and hold for 5 seconds, and the initialization is complete



Pick-proof button

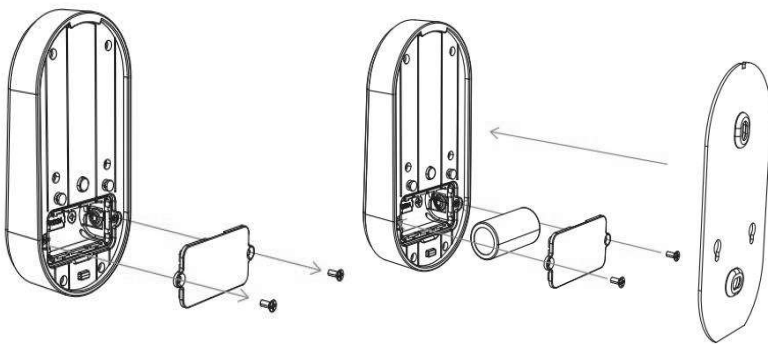
2.Installation

Step 1 Take down the panel



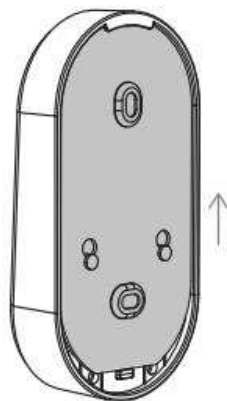
Press the button like the picture, and slide the panel.

Step 2 Install the battery



1. Loose the screw
2. Insert the battery and tighten the screw

Step 3 Install panel and complete



Press and slide up the panel. Install complete

3.Operation

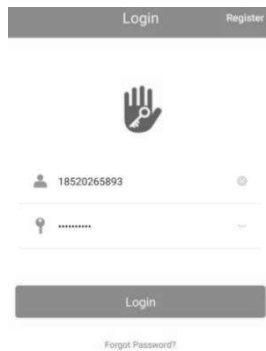
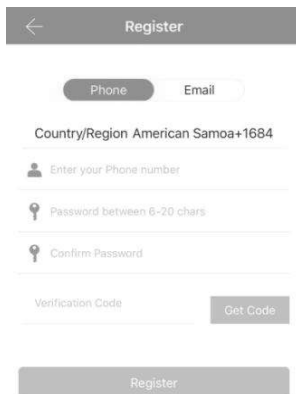
3.1.Registration



The software (iOS version) can be downloaded from the app store, and the Android version can be downloaded from the application store of Google play, Yingyongbao, Baidu, Ali, 360, Huawei, and Xiaomi.

3.2. Connect lock to the phone

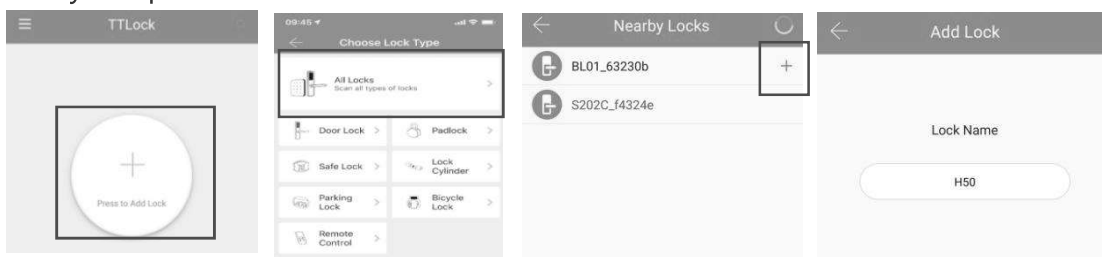
- 1) please scan the QR code to download the app
- 2) You can also search for TT Lock in the APP store(Google Play)to download
- 4) Register a new account (phone number or email) or login with an existing account.
- 5) Touch the lock screen to light, click "+ Add Lock"
- 6) The lock nearby will appear on the phone screen, Click "+"
- 7) Re-name the lock
- 8) The lock added successfully



TT Lock users can register the account by mobile phone and Email which currently support 200 countries and regions on the world. The verification code will be sent to user's mobile phone or email, and the registration will be successful after the verification.


3.3.Add locks

TTLock supports multiple types of lock devices. The lock needs to be added by the app after entering the add mode. Generally, a lock that has not been added, as long as the lock keyboard is touched, it will enter the add mode. The default password is 123456 if not added by the phone



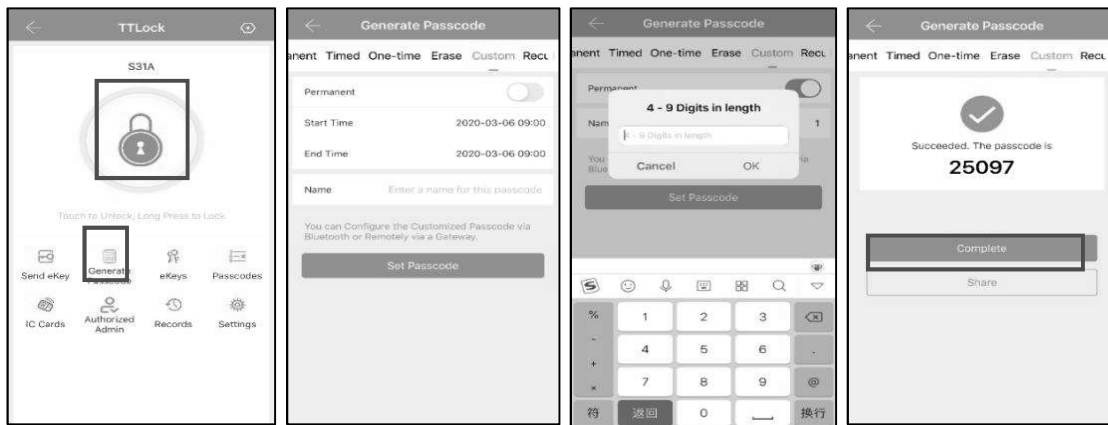
3.4. User Management

3.4.1. Bluetooth management


Make sure there is no problem with Bluetooth communication. After connecting the phone to the door lock as above, Click "  "to unlock.(the phone is within 5meters from the door lock)

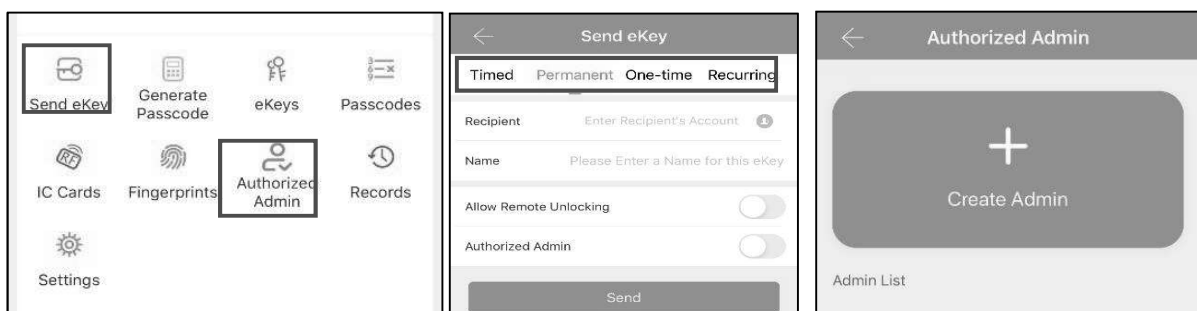
3.4.2. Setting Passcode

Passcodes are also a way to unlock. After entering the passcode on the locked keyboard, press the unlock button in the lower right corner to unlock. Passcodes are divided into permanent, time-limited, single, clear, cycle, and custom.(You can share the Passcode to other user via WeChat, SMS, Email, Messenger, WhatsApp)



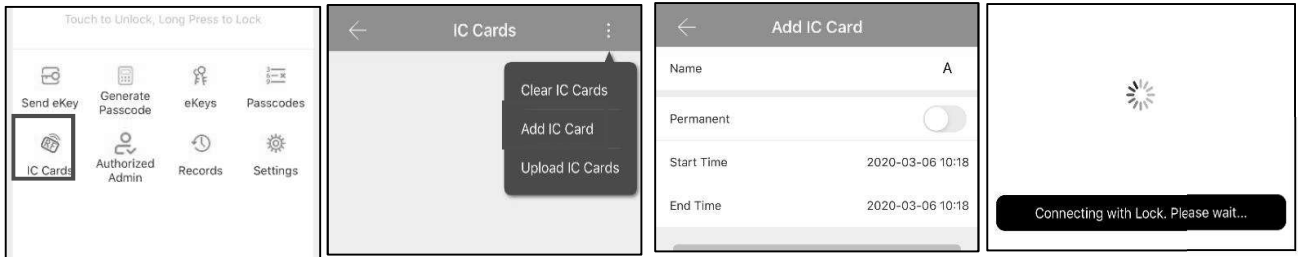
3.4.3. Send e-Key

Click on the "  " as shown in figure, you can send the eKey to other users of TTlock to authorize the unlock(the receiver must be download the APP and set up an account)→ Select e-key format (Timed, permanent, One-time, Recurring) → Enter recipient's account of TTlock,set the name and effective time of the eKey, Can choose to allow remote unlocking or disallowing, authorized administrator or not authorized, as shown in figure →Send→The recipient's account has Bluetooth unlock permission.




3.4.4. Add card


Supports opening doors through various IC cards. Before an IC card is used to open the door, it needs to be added first. The adding process needs to be performed by the app beside the lock. The validity period of the IC can be set, it can be permanent, or it can be limited in time.




3.4.5. e-Key management

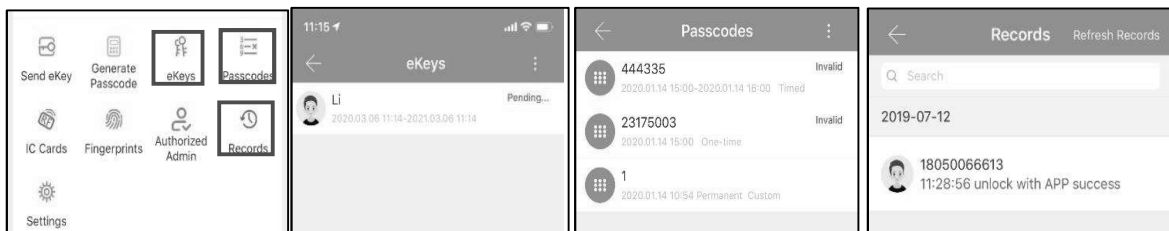
Click "  " The manager can delete ekey, reset ekey, send and adjust the ekey, meanwhile he can search the lock record.

3.4.6. Passcode management

Click "  ". All generated passwords can be viewed and managed in the password management module. This includes a password change, password deletion, password reset, and password unlock record.

3.4.7. Unlock records

Click "  " you can query your unlock record as shown in figure



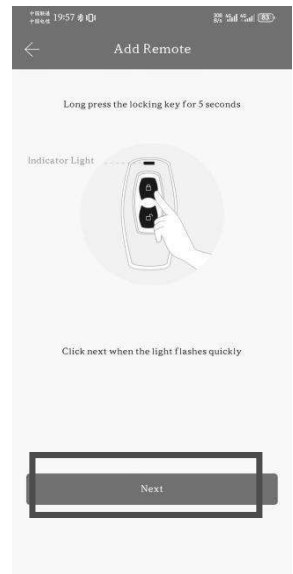
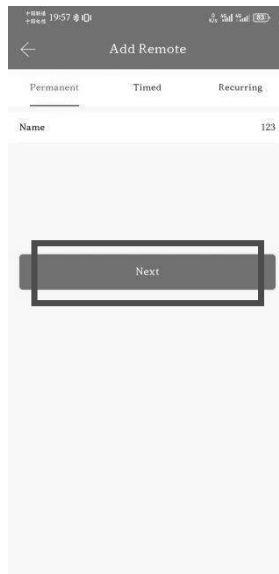
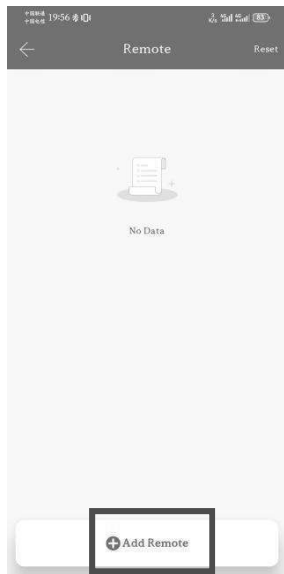
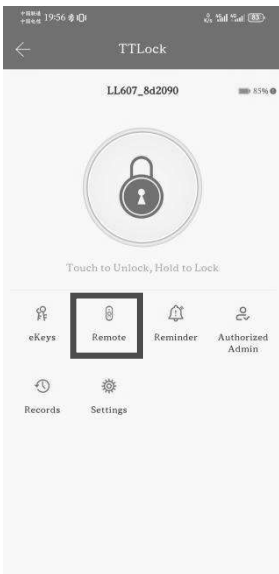
3.5 Connect with other lock

When K6 connect with the other lock, the K6 will be a remote control to unlock the other lock. When the K6 unlock, the B lock unlock as well.

If the other lock called B lock

1. Press "*"+"813"+"#" → verify Administrator pass code +"#" → "1"+"#" on the K6, and the K6 enter Pairing Mode.

2. After adding B lock to the TT Lock, click  to enter the interface, then click "Add Remote", click "Next" to add.



3. Connect completely. You can use K6 to control the B Lock.

